



Holy Week

Palm Sunday

Palms distributed
Saturday 5:00 pm and
Sunday 10:30 am



Good Friday

Worship
1:00 pm & 7:00 pm



Maundy Thursday Worship & Holy Communion

April 17,
7:00 pm



Good Friday

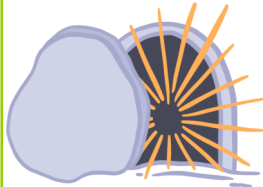
April 18
Open for prayer
Noon to 2:00 pm;



Easter Worship and Holy Communion

April 20

7:00 am at the
pavilion with
Communion
in the
Sanctuary,



and 10:30 am
in the Sanctuary

April 27 Congregational Brunch & Voter's Assembly Meeting

Please attend the April 27 meeting at 11:30 AM following the Sunday worship service. The catered brunch includes beverages, pastries, pasta, pizza, salad and desserts.

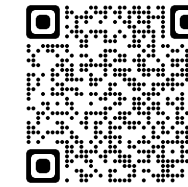
It will be a fast-paced meeting full of energy, fellowship and sharing. It will be interesting to obtain preliminary ideas about how members believe God is guiding our congregation to develop and use our gifts in the future. We welcome and look forward to your participation.



Congregational
Meeting



ZION
LUTHERAN CHURCH
235 Pond Hill Rd
Wallingford, CT 06492
(203) 269-6847



QR Link to
Church Website



LITTLE ZION
PRESCHOOL

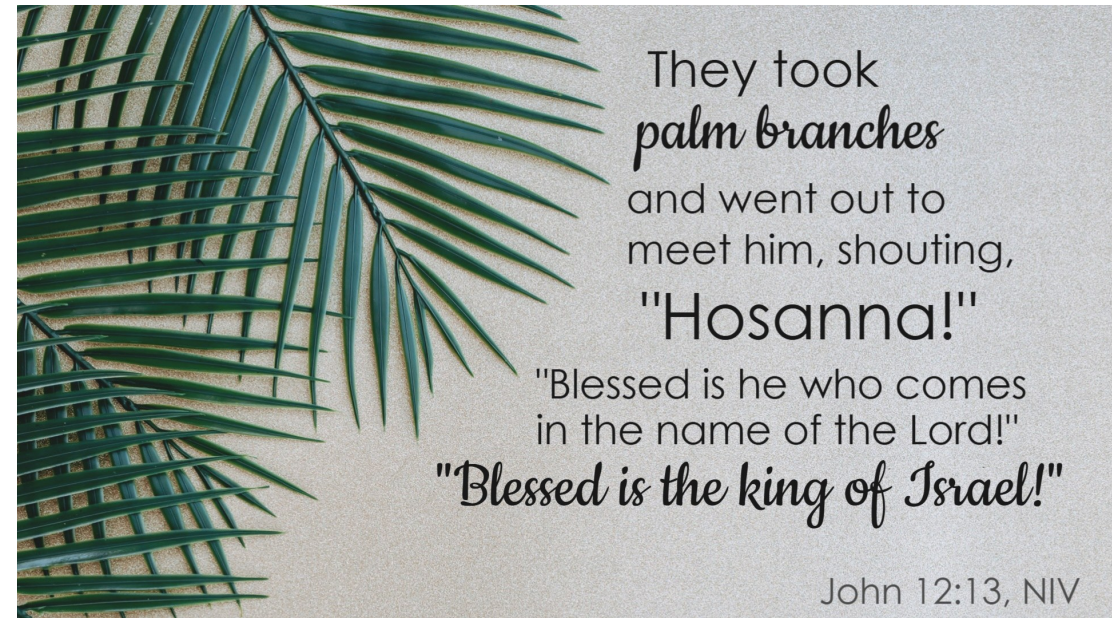
Our mission is to love, support and strengthen each other
as God's ambassadors, sharing the Gospel message
of salvation in Jesus Christ.

+ + + + +

Palm Sunday / Sunday of The Passion

April 12 & 13, 2025

+ + + + +



They took
palm branches
and went out to
meet him, shouting,
"Hosanna!"

"Blessed is he who comes
in the name of the Lord!"
"Blessed is the king of Israel!"

John 12:13, NIV



**THIS WEEK
@ ZION**

Saturday, April 12

11:00 am Community Easter Egg Hunt
5:00 pm Worship, Distribution of Palms

**Sunday, April 13,
Palm Sunday**

9:15 am Sunday School / Adult Bible Study
10:30 am Worship, Distribution of Palms
6:30 pm BSA Drum Group

Monday, April 14

7:00 pm Council Meeting

Tuesday, April 15

1:00 pm May Newsletter deadline

Wednesday, April 16

NO BIBLE STUDY

**Thursday, April 17,
Maundy Thursday**

7:00 pm Worship & Holy Communion

**Friday, April 18,
Good Friday**

Noon-2:00 pm Open for Worship
1:00 pm Worship
7:00 pm Worship

Saturday, April 19

NO WORSHIP

**Sunday, April 20
Easter**

7:00 am Son-Rise Service
10:30 am Worship & Holy Communion

**THIS SUNDAY
Palm Sunday, April 13
is the deadline to donate.**

If you would like to contribute toward the Easter lilies that beautify our chancel and altar on Easter, you will find special envelopes on the bulletin board in the Narthex. Flowers can be donated in honor of, or in memory of special individuals in your life.



**Altar Flowers &
Eternal Lights**

Thank you to everyone who has submitted the info for your chosen date(s). Please submit your envelope with the dedication information at least 2 weeks before your chosen date.

Some special request flowers may be an additional charge.

Altar Flowers

April 19/20 Jan Kirby
April 26/27 DATE IS OPEN

Eternal Lights

April 19/20 Jan Kirby
April 26/27 Deb Moro

**Lutheran Women
Spring Gathering**



Save the Date

The Mountain Laurel Zone will meet Saturday **April 26th** at 10:00am at Christ Lutheran Church, 24 Society Road in Niantic CT with the theme **“Blessed are they...”**.

Please bring diapers, wipes or size 0-9 month baby clothes to support the Anchor of Hope pregnancy resource center in New London CT. Send an email to MtLaurelZone@lwml-ned.org if you have any questions.

The Mountain Laurel Zone includes LCMS churches from Ashaway RI, Bantam, Cheshire, Groton, Madison, Meriden, Middletown, Naugatuck, New London, Niantic, Orange, & Wallingford CT. All women are welcome!




Prayer Requests

... from Last Weekend

- ✝ We continue to pray for those who have requested our prayers: Cathy, Amy and Kim, Sarah, Arlene and her brother Darrel, Sally, George Vessichio, Bill, Claire Chamberlain, Janice and Donna, Ani, Esther and Amy Haupt Shorb.
- ✝ For Pastor who had a mild stroke which has affected his mobility. He is receiving physical therapy.
- ✝ For younger adults struggling with substance abuse and mental illness.
- ✝ Beth Peters requests prayers for her husband who is recovering from four cracked ribs, and her brother-in-law, recently diagnosed with cancer.
- ✝ For Joe Barillaro, as he recovers from his surgery.
- ✝ For Victoria who had a medical emergency last Tuesday.
- ✝ At the death of Pete Kennedy, praying that his wife Debbie may be comforted.
- ✝ For Kathy P., with nasal cancer requiring extensive chem and radiation.

